



MULTITONE SIRENE SERIE E

C110620005

ES1 Sirene 32 toner 24V DC Rød

- 32 valgbare toner
- IP65
- 86-106 dB



PRODUKTBESKRIVELSE

ES1/ES2 er en rimelig sirene med 32 valgbare toner. Volum og tonevalg settes enkelt ved hjelp av dip-switcher. IP65 gjør at den kan brukes like godt ute som inne.

TEKNISKE DATA

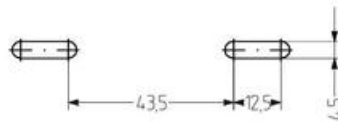
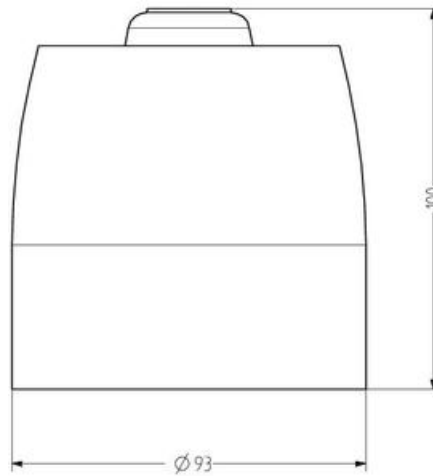
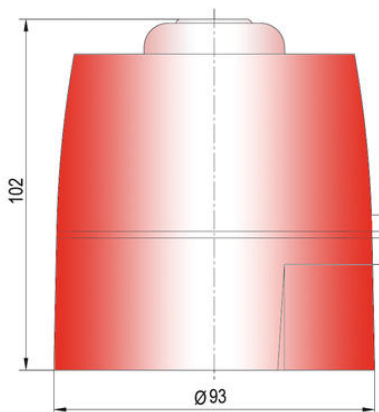
Antall toner	32 pc
Diameter	93 mm
Farge hus	Rød RAL 3000
IP-klasse	IP65
Koblingsklemme	2,5 mm ²
Lydnivå maks.	106 dB
Lydnivå min.	86 dB
Lydregulering	Ja
Matespenning DC maks.	24 V DC
Matespenning DC min.	24 V DC
Montering	Ingen
Nominell strøm maks.	0,035 A
Nominell strøm min.	0,006 A
Temperaturområde fra	-20 °C
Temperaturområde til	70 °C
Tonfrekvens maks.	2900 Hz

Tonfrekvens min.

440 Hz

Vekt

250 g



Tone table

ES1

No.	Sound	Description	DPF	2nd stage alarm Hz
1	LF sweep	800-1500 Hz @ 0.5 s	0001	800 count
2	information words	800-900 Hz @ 2 Hz	0002	800 count
3	warning tone	800/1200 Hz @ 0.5 s	0003	800 count
4	information words	800/800 Hz @ 2 Hz	0004	800 count
5	HF back up interrupted tone	2.800 Hz @ 1.5 s on/off	0005	2.800 count
6	LF back up alarm	800 Hz @ 100 ms on/off	0006	800 count
7	HF back up interrupted tone, fast	2.800 Hz @ 100 ms on/off	0007	800 count
8	LF continuous tone BS&BS1	800 Hz cont.	0008	same tone
9	sweep tone	800/900 Hz @ 1 Hz	0009	800 count
				1000/2000
10	Australian blue whinge	interrupted tone 915 Hz @ 0.425 ms on/off	0010	2.75 s on 0.25 s off 1000/2000
				0.5 s on 0.5 s off
11	Quick sweep tone	915 Hz count	0011	800 count
				0.5 s on 0.5 s off
12	emergency sweep tone	800/800 Hz @ 2 Hz	0012	800 count
13	sweep tone	800/915 Hz @ 2 Hz	0013	800 count
14	information HF alarm sweep	2.200/2000 Hz @ 2 Hz	0014	2.000 count
15	fast HF sweep	2.400-2.800 Hz @ 2 Hz	0015	2.400 count
16	LF tempo of pattern LF	950 Hz @ 0.5 s on/0.5 s off for 1.5 s repeat	0016	800 count
17	interrupted tone BS (standard)	800 Hz @ 0.5 s on/off	0017	800 count
18	BS&BS1 LF BS&BS1 in 1988	interrupted 915 Hz @ 0.5 s on/off	0018	same tone
19	interrupted tone, medium	1.000 Hz @ 0.25 s on/off	0019	800 count
20	BS&BS1 HF	915 Hz @ 0.5 s on/off	0020	same tone
21	continuous tone	800 Hz	0021	same tone
22	LF fast	800-900 Hz sweep @ 90 Hz	0022	800 count
23	HF continuous	2.800 Hz	0023	2.800 count
24	sweep tone	800-915 Hz @ 2 Hz	0024	800 count
25	German ON tone	sweep 2.000-2000 Hz @ 1 Hz	0025	800 count
26	Beaufort 10 signal	interrupted 600 Hz @ 60 ms on/off	0026	same tone
27	French tone AFNOR	554 Hz @ 100 ms and 140 Hz @ 100 ms	0027	800 count
28	Beaufort 10 clear signal	continuous 600 Hz	0028	same tone
29	LF tempo of pattern HF	2.800 Hz @ 0.5 s on/off + 0.5 s then off for 1.5 s repeat	0029	2.000 count
30	British Energy ramp, short	800/1.200 Hz rising then holding 0.25 s	0030	800 count
31	FF BS&S1 Talarone	alternating tone 800/915 Hz @ 2 Hz	0031	800 count
32	British Energy ramp, long	800/1.200 Hz @ 2 s rising/2 s holding	0032	800 count

The sound pressure decreases by 6 dB when doubling the distance; the following distance table is to be seen as indication, as also factors like tone type, wind speed, wind direction, humidity, weather conditions etc. do influence the sound pressure level.

Distance (m)	Sound pressure dB (A)																					
1	65	70	75	80	85	90	92	94	96	98	100	102	104	106	108	110	112	114	116	118	120	
2	59	64	69	74	79	84	86	88	90	92	94	96	98	100	102	104	106	108	110	112	114	
3	55	60	65	70	75	80	82	84	86	88	90	92	94	96	98	100	102	104	106	108	110	
5	51	56	61	66	71	76	78	80	82	84	86	88	90	92	94	96	98	100	102	104	106	108
10	45	50	55	60	65	70	72	74	76	78	80	82	84	86	88	90	92	94	96	98	100	
20	39	44	49	54	59	64	66	68	70	72	74	76	78	80	82	84	86	88	90	92	94	
30	35	40	45	50	55	60	62	64	66	68	70	72	74	76	78	80	82	84	86	88	90	
50	31	36	41	46	51	56	58	60	62	64	66	68	70	72	74	76	78	80	82	84	86	
100				40	45	50	52	54	56	58	60	62	64	66	68	70	72	74	76	78	80	
200				36	41	46	48	50	52	54	56	58	60	62	64	66	68	70	72	74		
500				30	35	40	42	44	46	48	50	52	54	56	58	60	62	64	66	68		

The sound pressure decreases by 6 dB when doubling the distance